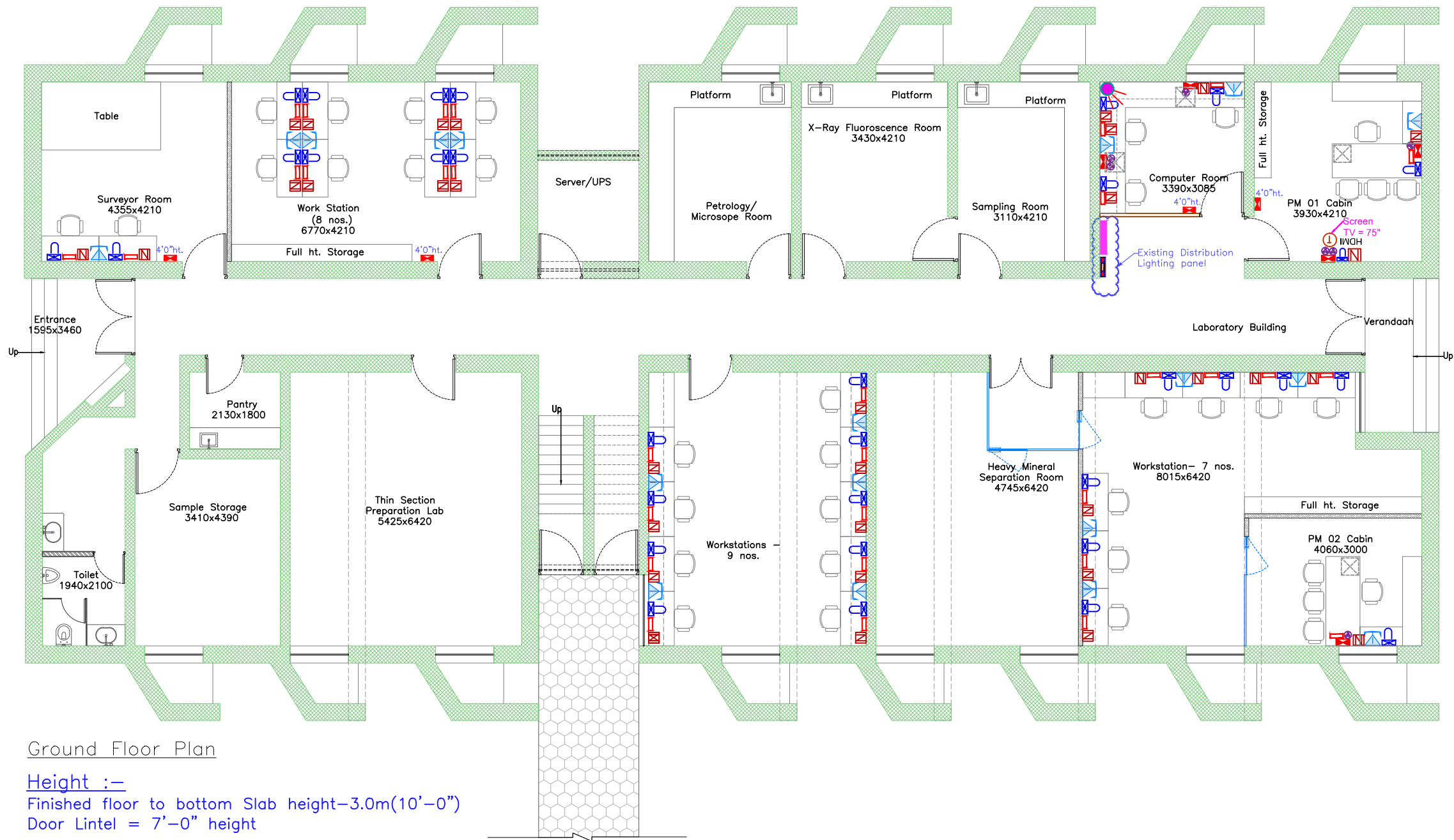


LAST SAVED BY: kparikh 19/5/25 12:49 PM
PLOTTED BY: Khyati M. Parikh
This drawing is property of Mamta Shah & Associates. Without our prior consent, it must be neither copied nor made available to third parties, nor must it be used by the recipient or third parties for the purpose other than for which it is meant.



Ground Floor Plan

Height :-

Finished floor to bottom Slab height-3.0m(10'-0")

Door Lintel = 7'-0" height

Legend for Electrical	
Symbol	Wall mounted lighting
	UPS Power Supply 2 nos.- 6 amp plug for (PC & Monitor)
	Network for Server
	Switch board heights mentioned in Legend
	6 - AMP Plug point
	Distribution board (T.P.) as per site condition
	TV Cable
	Call Bell Switch
	Intercom Telephone
	Flip up box For table top



Reference Image For Incharge Room & Survey/Geology Room Switchboard on the table top (Flipup Box).

Note :-

Overall Cabin

A) Below mentioned points has been executed at Cabin Table top with Flip up Box:-

1. Computer Network point
2. 2 nos 5 Amp Power Supply Points (UPS)
3. Telephone Point (2 Nos.)
4. 1 nos 5 & 15 Amp Power Supply points

B) Below mentioned points has been executed at Table top Wall Switch Board:-

1. Raw power 5 amp plug point with switch
2. Call bell point (Only Incharge Cabin)

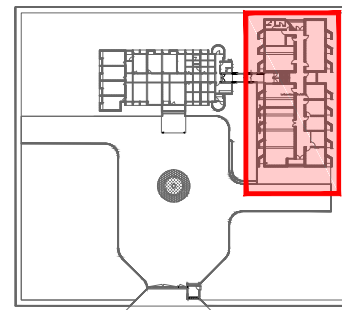
Note :-

Workstation

Below mentioned points has been executed at Cabin Table top with Flip up Box:-

1. Computer Network point
2. 2 nos 5 Amp Power Supply Points (UPS)
3. Telephone Point (1 Nos.)
4. 1 nos 5 & 15 Amp Power Supply points

Key Plan:



Project:

GMDC Township Development

Drawing:

Telecommunication Layout_Ground Floor
Laboratory Building
Sheet 01

Drawing Code:

2310_INT_TD_LAB_TEL_R2

Print Size:

A2

Scale:

1:80

File Title:

2310_INT_TD_LAB_TEL_R2

Project Code:

MSA

Project Type:

Arc & Int

Location:

Ambaji

Print Date

19-May-25

Drawn By

K Parikh

Checked By

K Patel

Approved By

M Shah



MAMTA SHAH & ASSOCIATES
Architects & Interior Designers
C-12, Chanakyapuri Society,
Chanakyapuri Char Rasta,
New Sana Road, Baroda
Ph. No. +91 265 2712267 / 2710967
mamta@msain.com / www.msain.com

Client:



Gujarat Mineral
Development
Corporation